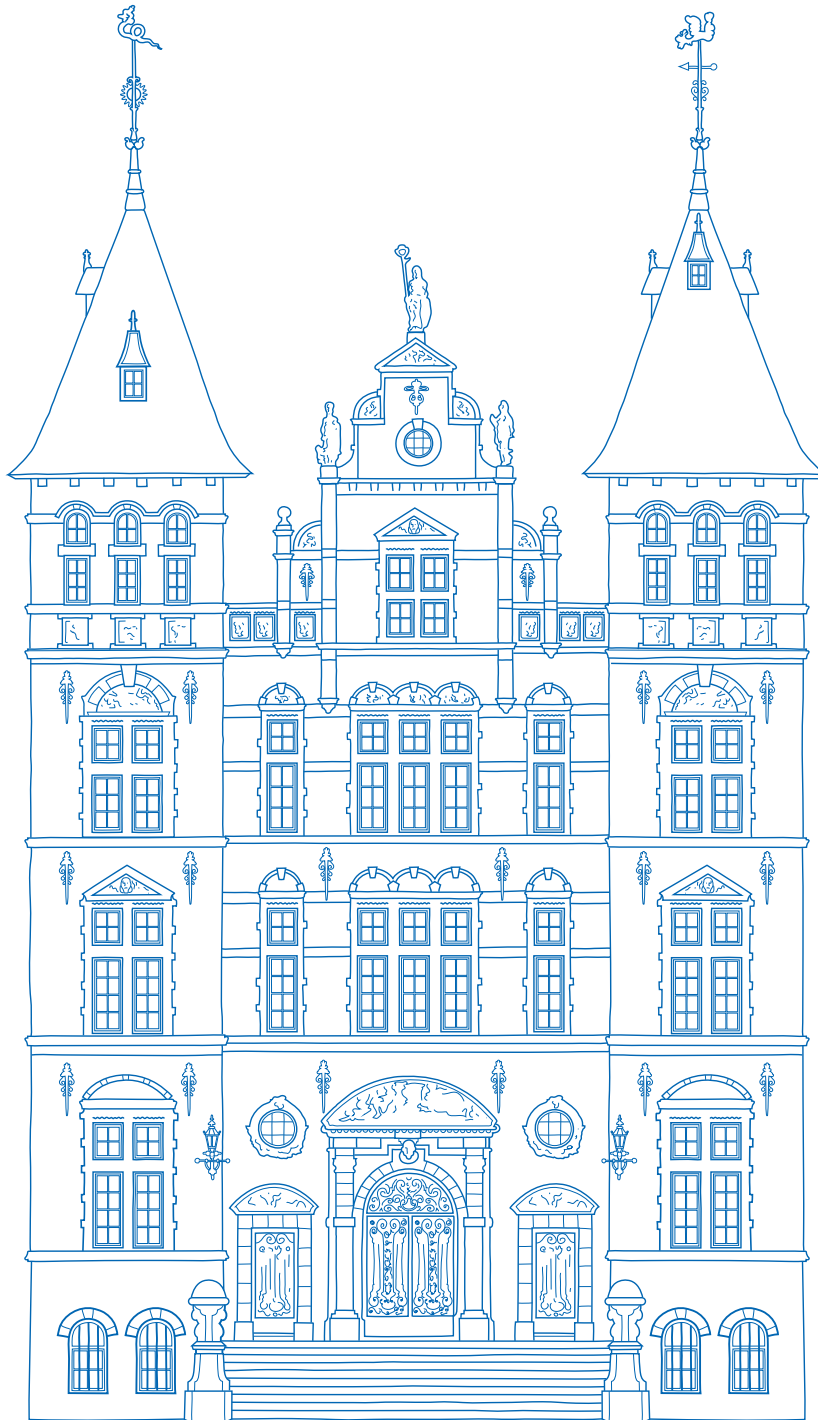




KIT Koninklijk
Instituut
voor de Tropen

THE ROYAL ENTRANCE



CONFERENCE & EVENTS



THE ROYAL ENTRANCE

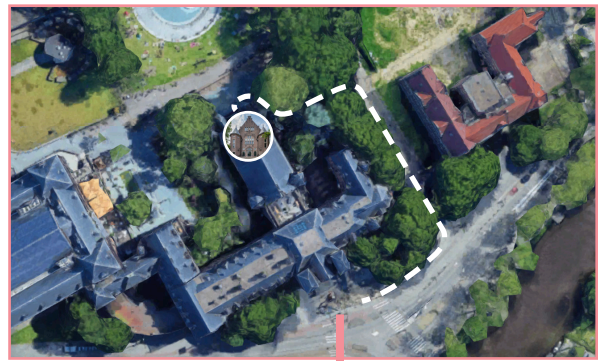
We would like to welcome you through **the Royal Entrance**. This is the beautiful entrance, specially made for Queen Juliana, located at Oosterpark.

You can approach the Royal Entrance on foot from two directions. If you come via the **Linnaeusstraat (2c)** passageway, we recommend that you be dropped off here and follow the walking route below.

When you come via the **Mauritskade (63)** entrance, you can walk around the building via the walking route below and walk through the Oosterpark.



Linnaeusstraat 2c



Mauritskade 63

If you have **walking difficulties** or if you want to be dropped off in front of the entrance, we request you to contact our events department via the information below.



Royal Entrance

