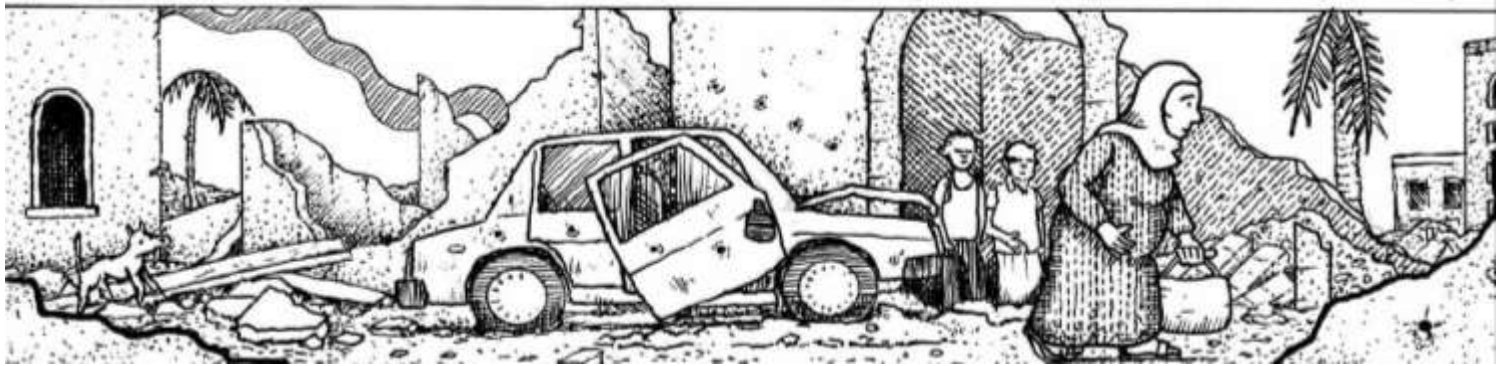


Sexual and reproductive health and rights of refugees & undocumented migrants

- from evidence to sharing stories -

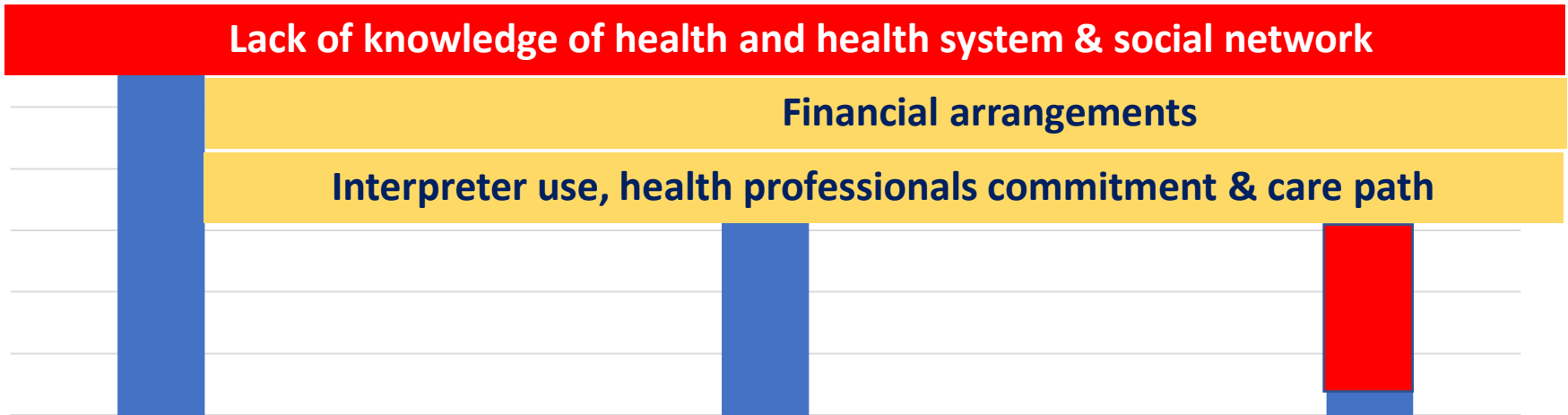


Simone Goosen



Research & practice & policy

Access to sexual and reproductive health care (SRHR)



Asylum seekers

Asielzoekers

COA 23.000



Refugees w. residence permit

Statushouders 220.000

(CBS largest non-W. countries only)



Undocumented migrants

Ongedocumenteerden

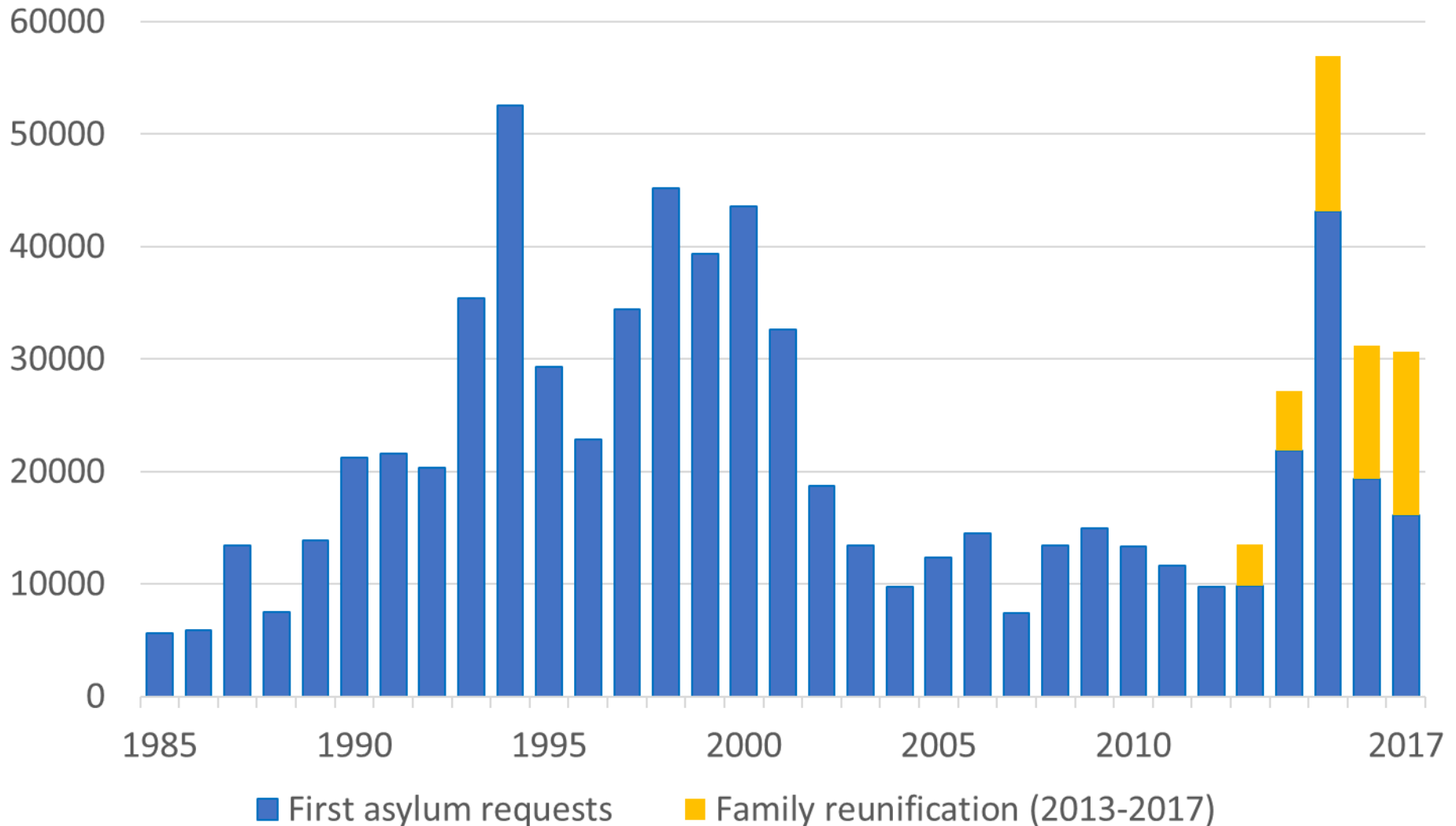
WODC est. 20.000 - 63.000

General recommendations for health care for refugees

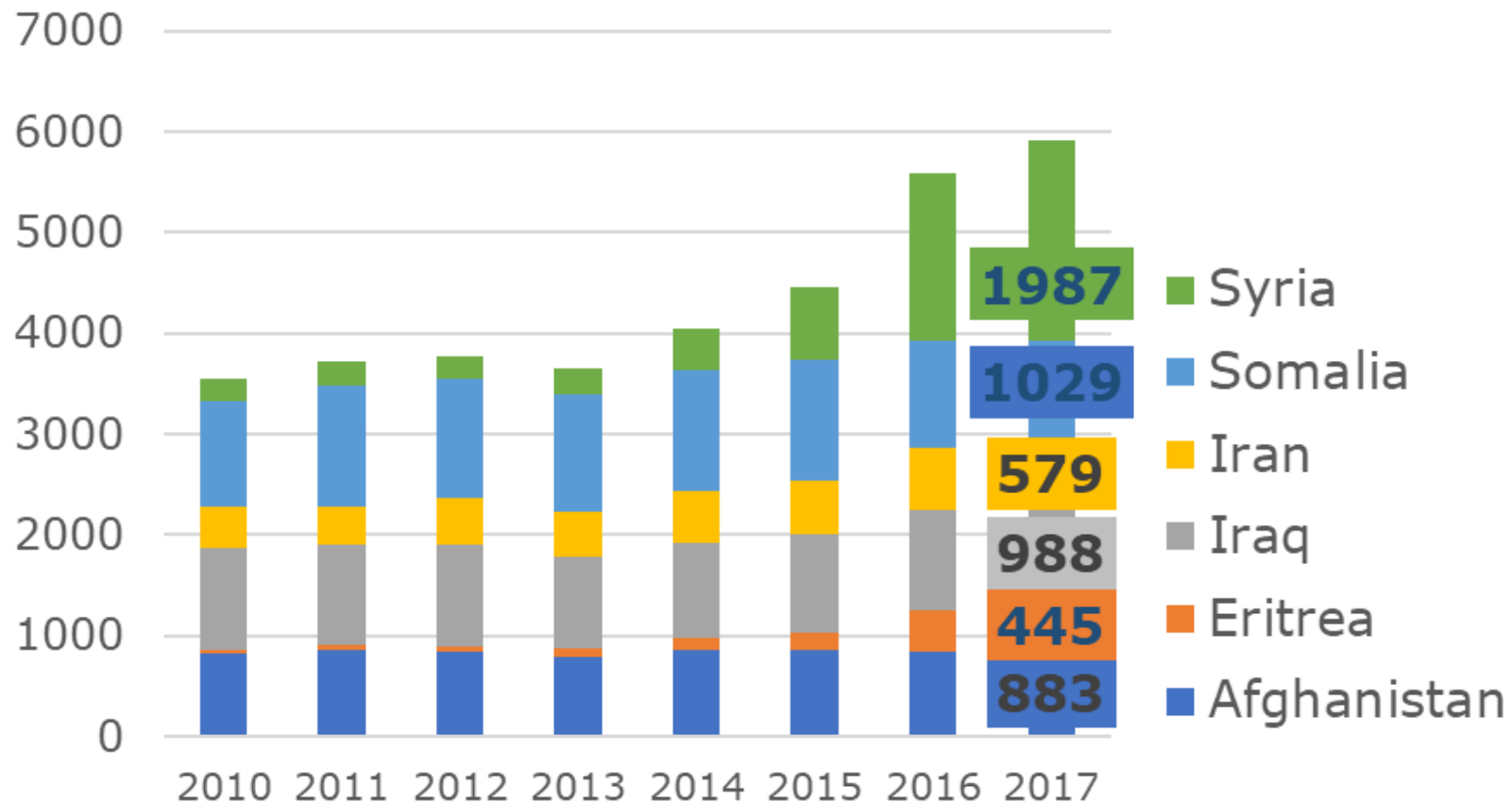
HARVARD PUBLIC HEALTH REVIEW

- Help women & families navigate the health system
- Use professional medical interpreters
- Establish (clinical) connections (continuity of care)
- Have clinical suspicion for common chronic & infectious diseases
- Integrate mental health care in primary care

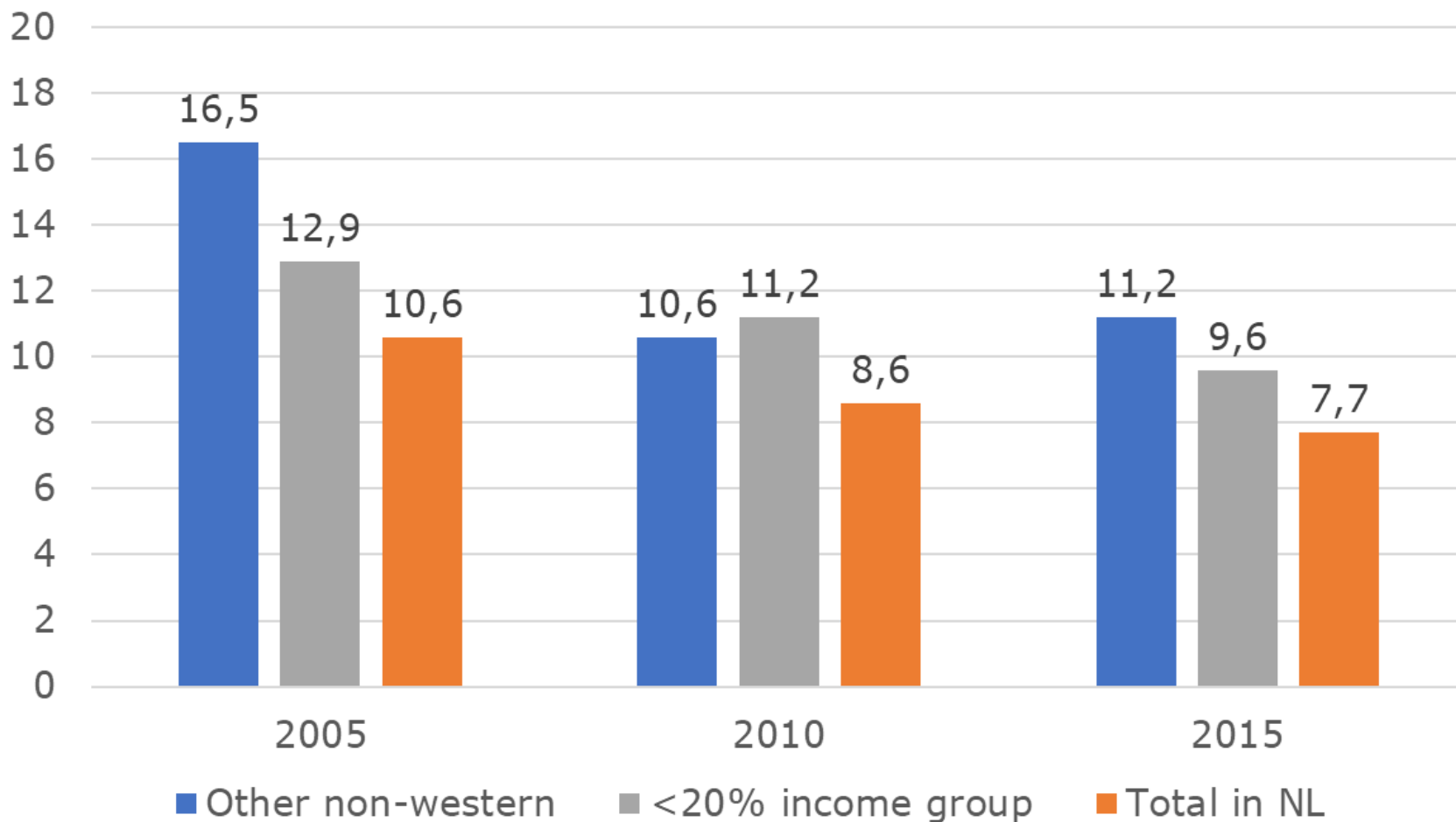
Number of first asylum requests in NL per year (CBS)



Number of live births in NL per year
by country of origin mother (CBS Statline)



Perinatal mortality rate (<=28 days) per 1000 births (CBS data)



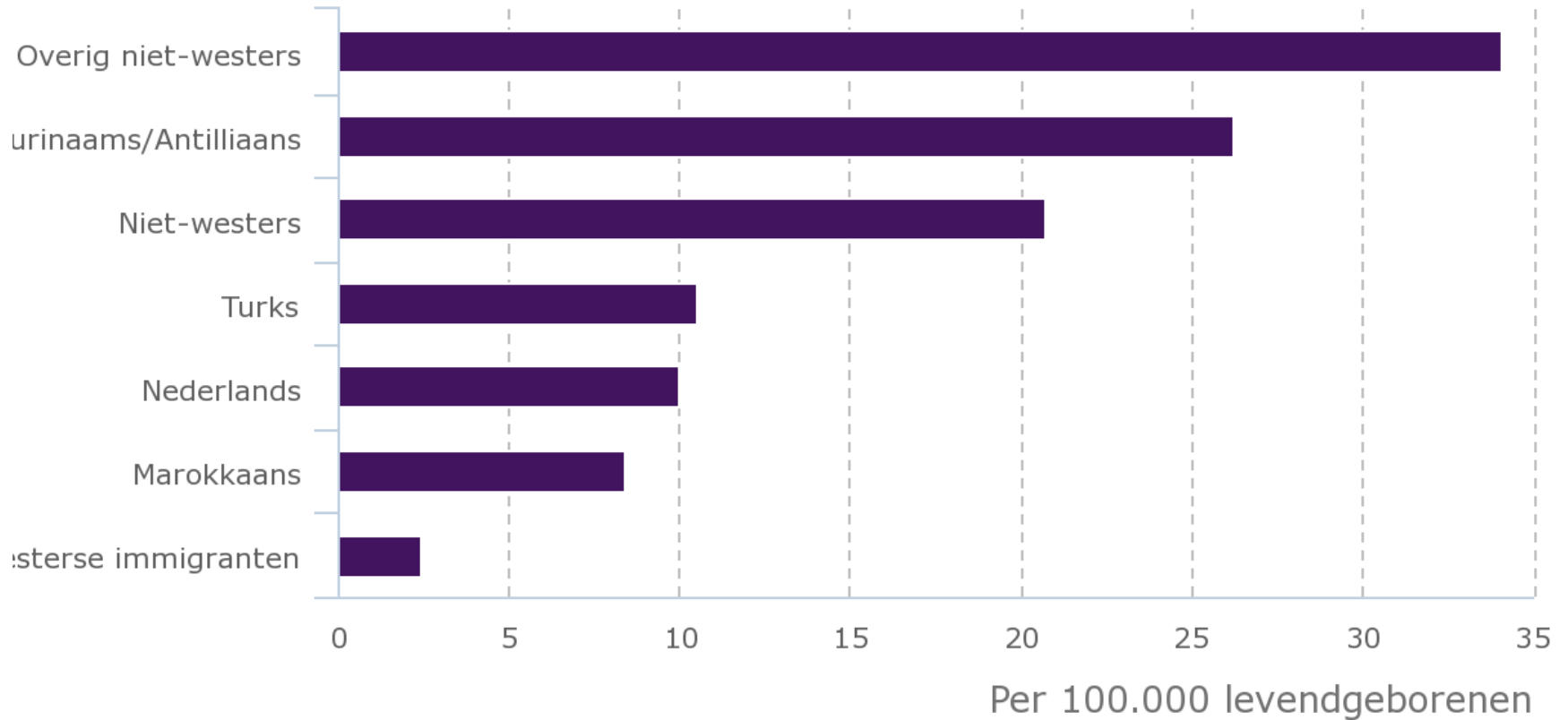
Number of perinatal deaths 'other non-western':

164

119

144

Maternal mortality in NL by origin mother 1996 - 2005



■ Maternale sterfte per 100.000 levendgeborenen

Focus on life course approach



E.g. Kansrijke start - Nu niet Zwanger
Centering pregnancy – Centering parenting
- Wijzer in de liefde - Zanzu.nl -

Theme 1 – social support



In all recommendations:

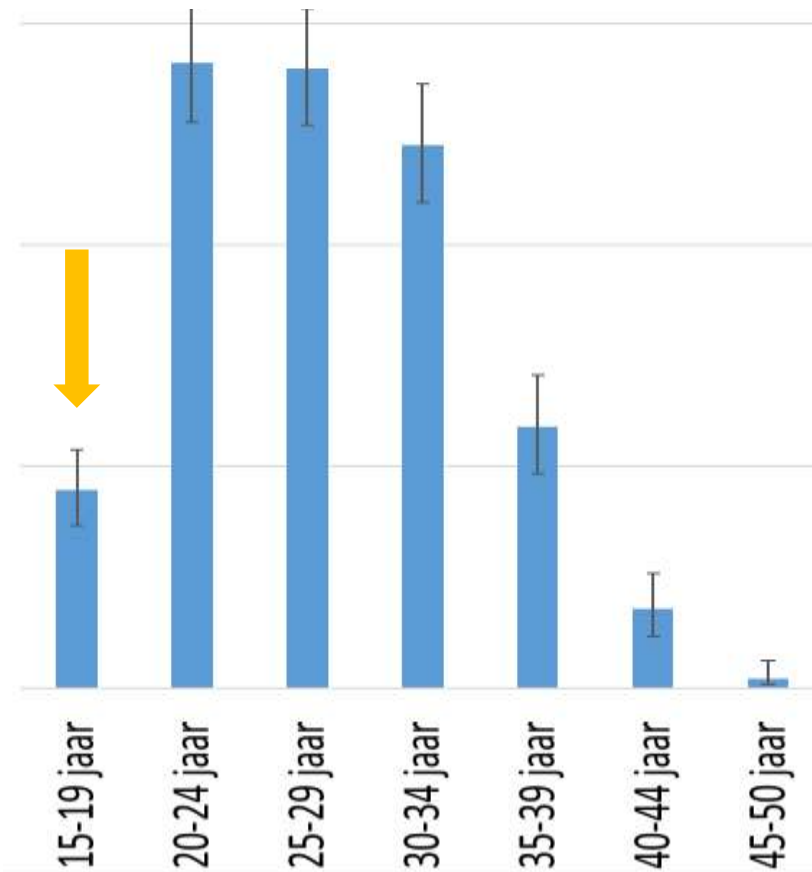
Organise maternal health sessions ensuring the engagement of a competent women's group who can be trained as peer educators

e.g. M. Abdelwahab, scriptie, 2018

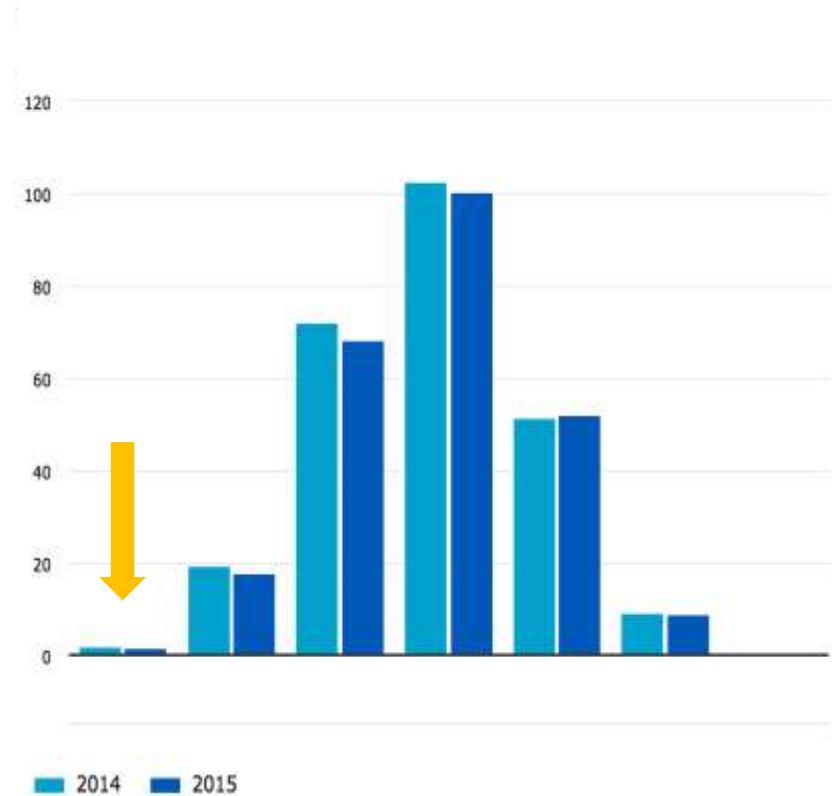
Theme 2 – prevention of unintended pregnancies

Birth rate per 1.000 women per year

Estimation for COA reception
2013 – 2015



Netherlands 2014 - 2015



Theme 3 – family attachment

Mental health of pregnant migrants from low & middle Income countries

- 31% perinatal depressive disorder
- 17% perinatal major depressive disorder

Fellmeth, Fazel, Plugge BJOG, 2017

Importance of family attachment

.... help those families that are not doing well
to find a different pathway and
deviate from malfunctioning

Elisa van Ee, thesis, 2013

Priorities for reproductive health

- Promote building social support & resilience
- Prevention of teenage & unintended pregnancies
- Attachment mother, father, baby & older children

Interpreter costs & use

Reflect on your role(s)

Health professional Researcher
Policy advisor Activist Lobbyist

Driver Guide Interpreter

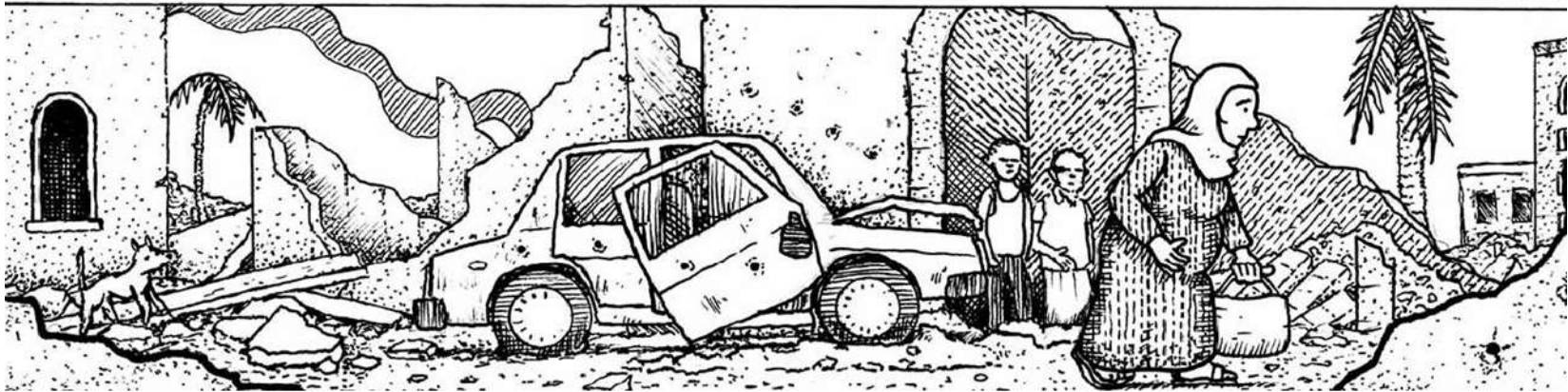
.....



Become a trusted advisor



Share stories on the use (+ & -) of professional interpreters in health care



Learn more about interpreter use: www.nspoh/e-learning



Bron: Humans of Heumensoord