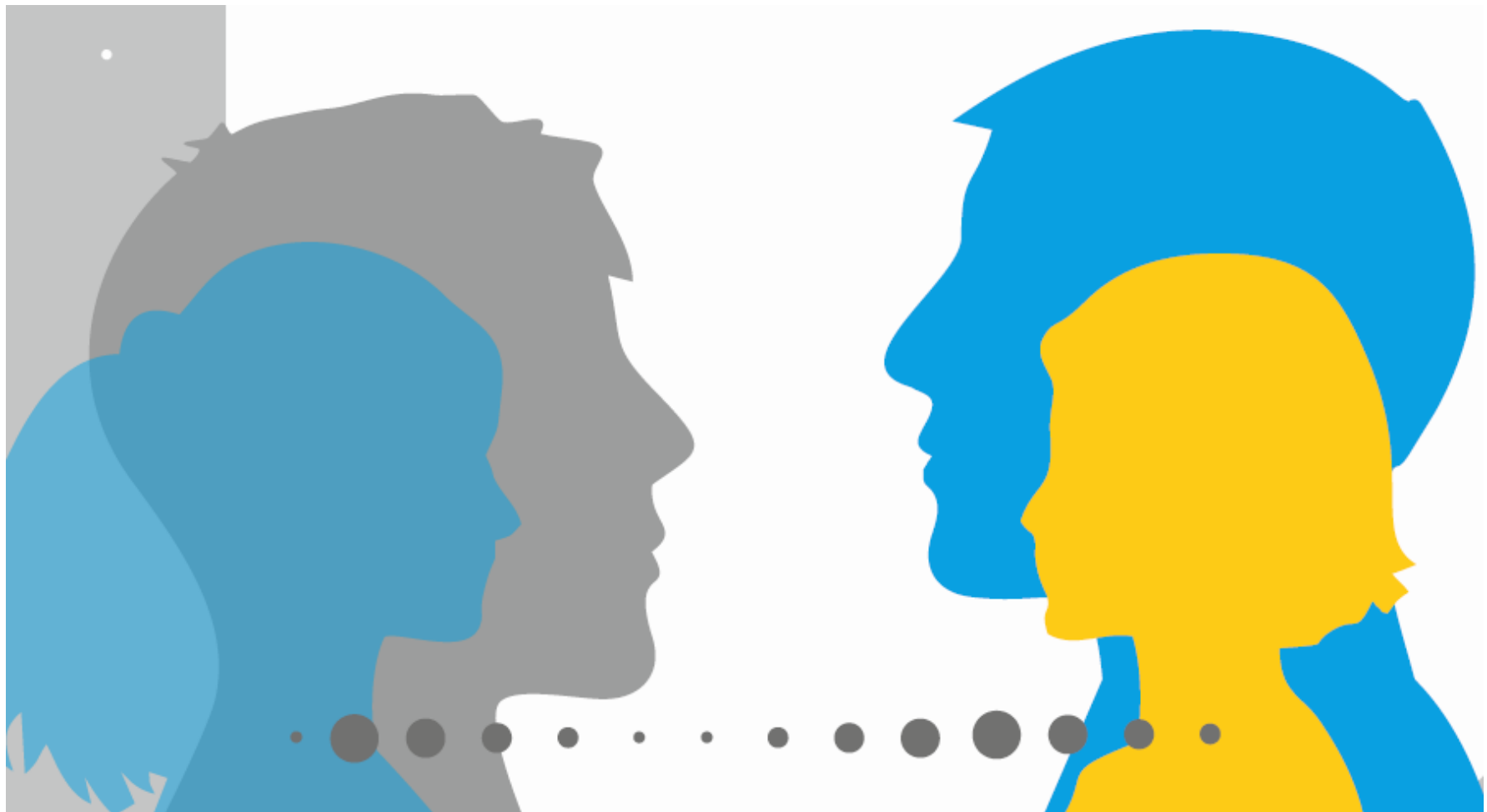


# The potential of peer provision



**Laura Hurley**

**Technical Adviser, Youth Services**

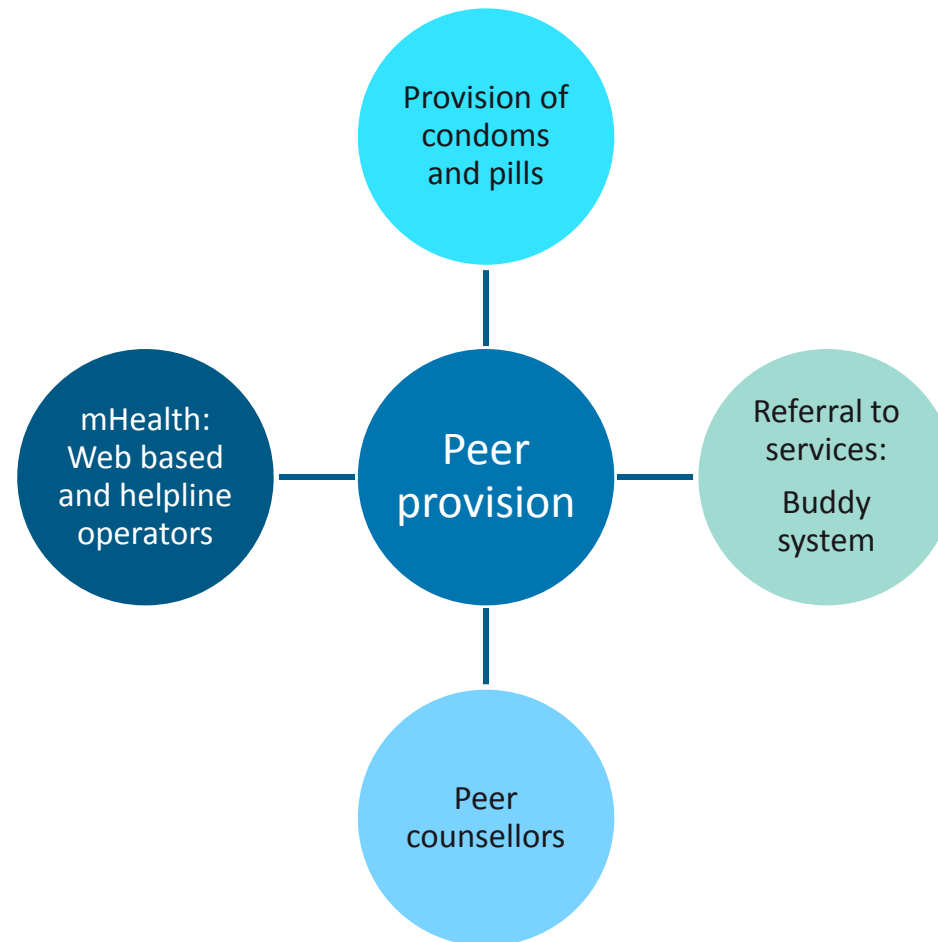
**IPPF**

# A youth centered IPPF: Peer Provision

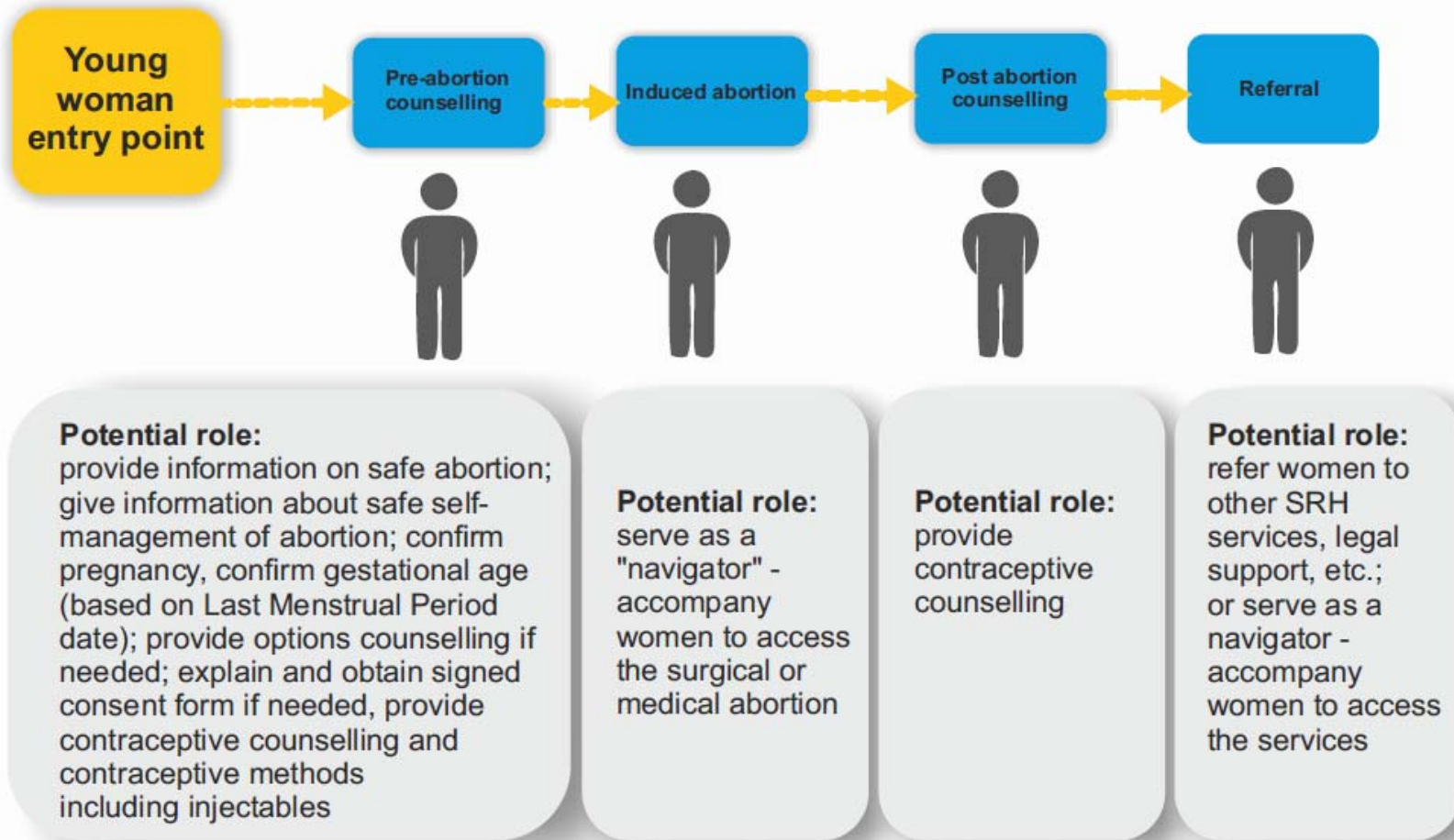
A system of giving and receiving care founded on key principles of empowerment, promotion of health literacy and self-care, and respect and mutual agreement about what is needed between people of similar age, background, culture and/or social status.



# Youth Peer provision in IPPF: Different models



# Example: abortion services



*“When a woman accompanies a peer in the process of getting an abortion we move towards elimination of stigma and to social depenalization of abortion. These service provision models are founded on the values of solidarity. When a woman decides to accompany a peer, she is empowered.”*

# Benefits of peer provision initiatives

- Increase access to sexual and reproductive health services
- Address the need to shift/share tasks (e.g. when there are shortages of health personnel)
- Build trust : address stigma in health service provision
- Address gaps found in peer education models (e.g. improving the link between education and services)
- Target specific target groups: young people living with HIV, young people who are LGBT, sex workers, etc.
- **Contribute to our youth empowerment goals!**

*“Peer counselling is a way of expanding the network of youth; the friendliness of the services...it is attractive to clients and also offers growth and empowerment opportunities for young people who are trained as peer providers”.*

# Kenya (FHOK): young peer providers

## 1. SRHR service provision:

- Counselling on sexuality and relationships
- Contraceptive counselling
- STI prevention and provision of condoms
- Replenishing of pills and condoms
- Providing support to those in distress e.g. unsafe abortion

## 2. Service promotion activities:

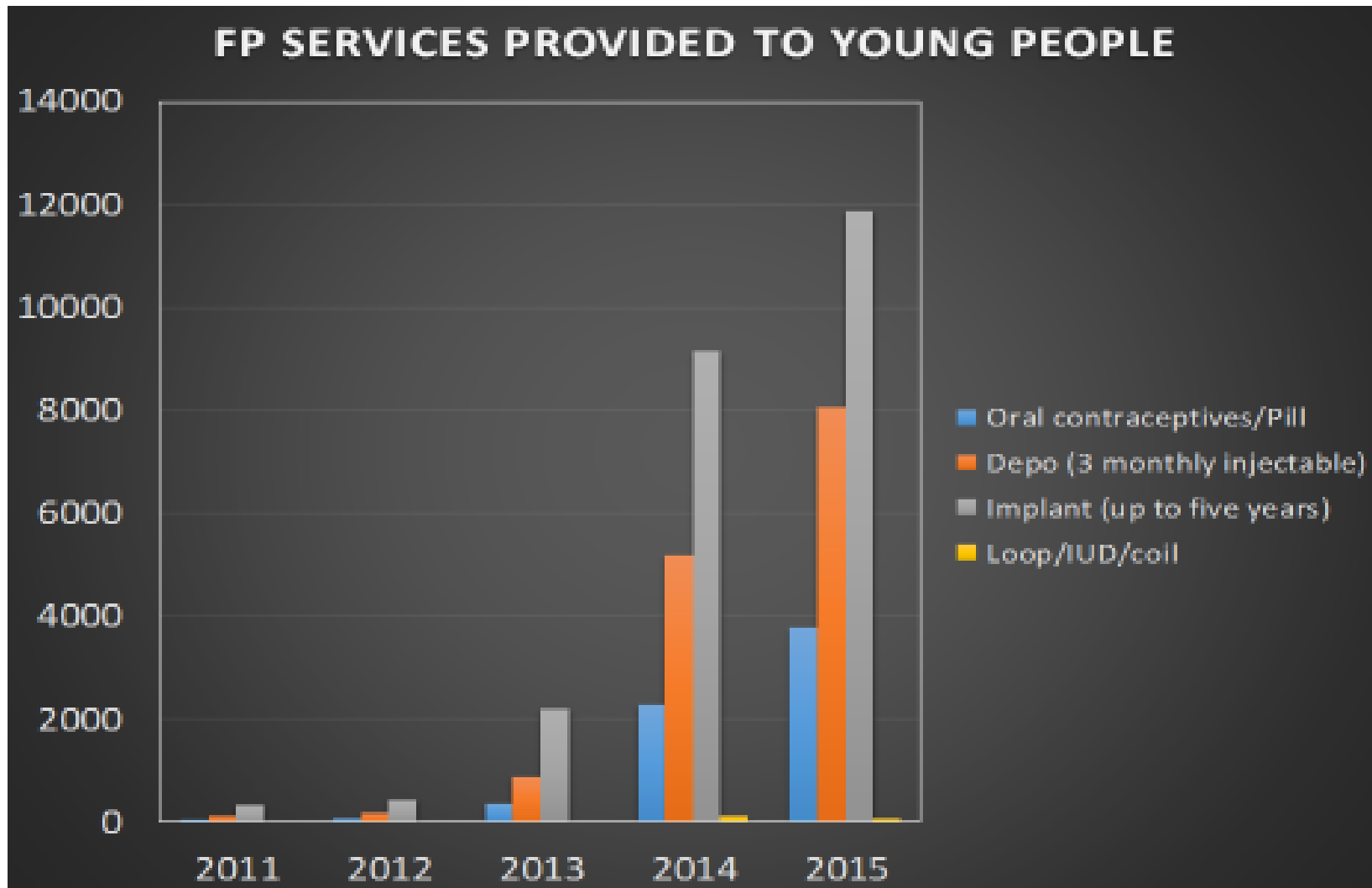
- Educational events in schools
- Acted as point of contact for SRHR services at community level
- Champions for use of long acting methods within institutions of higher learning

## 3. Linkage to health facilities:

- Referral of young people to health facilities for high level SRH services
- Act as channels of feedback to services delivered at facility and during outreaches
- Update the health facilities on emerging issues among the young people in the community



# Achievements







## Lessons learned by FHOK

- **Mentorship** of the peer providers by service providers is key to enhancing skills development and retention
- Engagement of **parents, community leaders and teachers** is key to facilitating roles of peer providers in reaching young people
- Young people **coaching** other young people ensures skills transfer and sustainability of initiative
- Linking **digital platforms** to functional referral network is effective in enhancing service uptake





## Recommendations

- Developing clear guidelines for **recruitment and retention** of peer providers and written **job descriptions**
- Sharing information about the peer providers' **roles and responsibilities** with health professionals
- Setting clear and realistic expectations for peer providers in terms of **incentives, growth opportunities**, etc.
- Applying consistent **work policies** to both health professionals and peer providers (e.g. in relation to child protection)
- Providing well-structured **orientation** to peer providers
- Promoting spaces where peer providers and health professionals can establish a **dialogue**.



# What is next for peer provision in IPPF?

- Provide guidelines and support for design, implementation, monitoring and evaluation of these initiatives
  - Identify our Member Associations' motives
  - Understand the legal context
  - Understand the local context: buy-in of the community
  - Discuss young people's role and "limitations": e.g. confidentiality issues
- Make sure we are on the right track
  - Maintaining peer providers' distinctive role
  - Inclusive institutional policies for peer provision
  - Training and supervision
  - Operational research/evaluation